

Product	Document type	Release #	SAP/Doc number	Release date
DVR 600 Series	Release notes	V1.3.2		2011.09.30

## Video Recorder 600 Series new firmware versions

### 1 DVR 600 Series firmware version 1.3.2 (date 2011-09-27)

File name: 600series.bin (2011-09-27)

This release includes the following improvement:

- Improve dome control using Intui keyboard.
  - Immediate dome control when full screen is selected for cameras assigned for dome control.
- Quad image performance on Mon. A improved (diagonal lines were more jagged than in other multiscreens).
- Mon. B image performance improved (shown some flickering by certain monitor/camera combinations)
- Setting added to Auto delete video older than 3 days. For some countries this is required by law.
- SMTP port number was default on 587 when SSL is enabled.
  - This port number is now user selectable.

This release includes the following bug fixes were below issues are solved:

- In low or unstable network configurations the DVR sometimes block any network user access until the unit was power cycled.
- It was not possible to record a tour in G3 domes via DVR.
- DVR was losing network gateway in some network applications.
- Network connection was not possible immediately after network disconnect.
- DVR ID in web pages showed one number higher than set in DVR.
- DVR rebooted after a number of smart search actions in web interface.

**Bosch strongly recommends upgrading to the latest firmware to achieve the best possible functionality, compatibility and performance.**

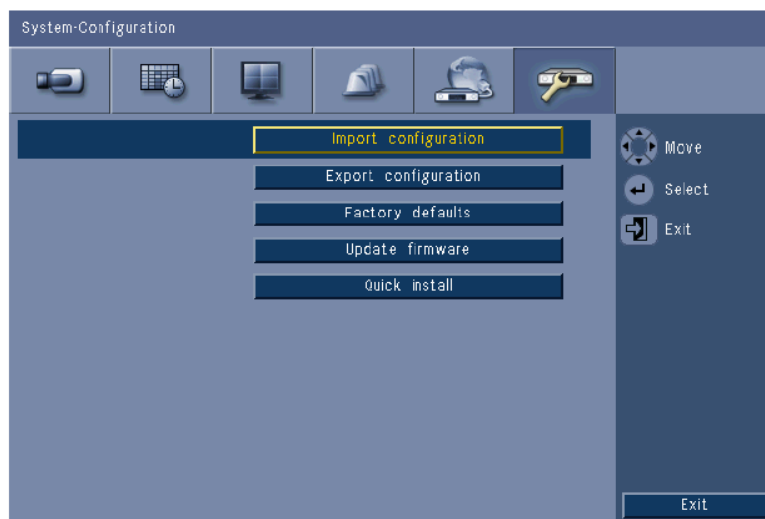
## 2 Update procedure

To update the DVR 600 Series to the latest firmware, please refer to the Video recorder 600 Series Operation Manual, chapter 6.6.5 or follow instructions below:

1. Put firmware v1.3.2 via a PC on the root of a USB memory stick (file name: 600series.bin [date 2011-09-27])
2. Insert the USB stick into the front USB connector of the DVR
3. Log on as "ADMINISTRATOR" in the local unit
4. Select **Menu** and go to the "System > Configuration" screen

Product	Document type	Release #	SAP/Doc number	Release date
DVR 600 Series	Release notes	V1.3.2		2011.09.30

5. Select **Update firmware** to upgrade the DVR software. In this case, the current DVR settings and video will not be deleted or replaced during the update process.



**Figure:** Update firmware menu

6. Select **OK** to begin the update process or click **Cancel** to stop and exit. After the update process is completed you have to press **OK** so that the system will automatically restart.

Alternative a firmware upgrade can be performed via the Web Client:

- Open Internet Explorer and type on the address bar the network IP address of the unit
- Log on by entering the User ID (default ADMINISTRATOR) and Password (default 000000)
- Select the configuration mode by clicking on the "Configuration" button
- Select 'System' and then 'Configuration'
- Browse to the v1.3.2 firmware file name "600series.bin" (date 2011-09-27)
- Press the "Update" button

Firmware will be automatically updated and unit will be restarted.

## 3 DVR 600 Series firmware version history

### 3.1 Version 1.1.0

File name: 600series.bin (2010-11-30)

Initial firmware version

### 3.2 Version 1.2.0

File name: 600series.bin (2011-03-28)

## Security Systemsystems

Product	Document type	Release #	SAP/Doc number	Release date
DVR 600 Series	Release notes	V1.3.2		2011.09.30

This release includes the following improvement:

- PC application support (CC v3.32) of DVR 600 Series with firmware version 1.2.0.